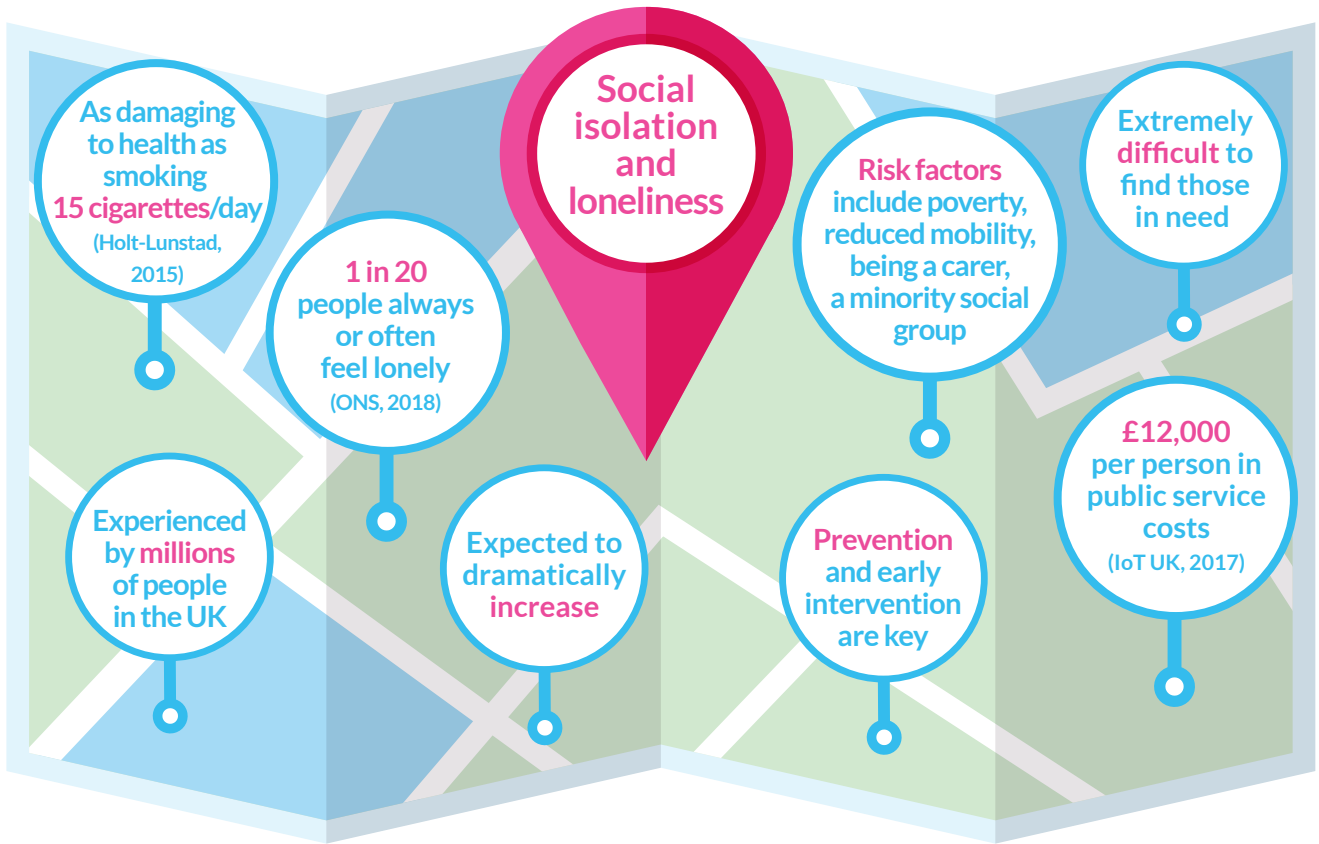




Careview

# Reducing loneliness

with an app and a map



## Careview

- an app for finding people who are socially isolated or at risk
- codesigned with outreach workers, housing officers, health professionals, clinicians, academics, police and fire service



Use app guide to local services



Report sign of concern via the app (untidy garden or post piling up)



Using heatmap for areas of outreach planning

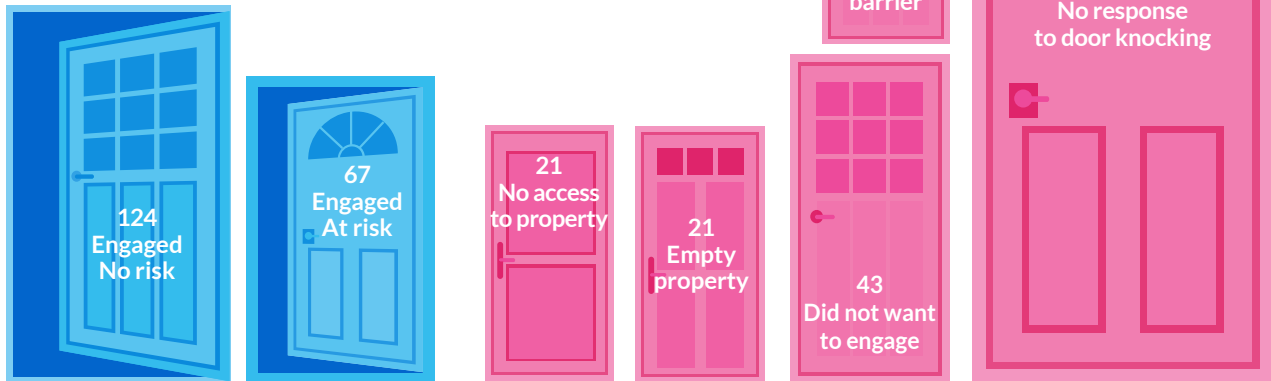


Door knocking and leafleting

# Independent co-designed feasibility study

## Door knocking in 6 deprived neighbourhoods

67 properties (35% of **meaningful engagement** with residents) were found to be at risk by outreach workers. 60% of all properties which were door knocked **did not open the door**.



The door knocking has helped our team understand the area better and sparked new ideas how we can support communities.

*Outreach worker*

We need to knock, even if we only find a few people, otherwise we would miss them... Not everybody comes and asks for help.

*Outreach worker*

You get a bit of a [gut] feeling after a while, for example when there's a house in disrepair, with a dark and overgrown path to the door.

*Outreach worker*

## Potential benefits

- Reconnecting residents with their community, preventing escalation
- Improving the effectiveness and efficiency of outreach work and partnerships
- Raising awareness and fixing gaps in the current referral pathway

## Invest in Careview today.

Scale up app use and optimise outreach and follow up activities

Determine Careview's predictive, economic and social value

Discover new uses for the app: how can Careview help you?

[leeds.care.vu](https://leeds.care.vu) [Read our evaluation report](#) [hello@care.vu](mailto:hello@care.vu)